



Partners News

Partners in Forestry Landowner Cooperative Newsletter

May/June 2005

From the Board

Roland Rueckert

In the forties, when I was a boy growing up in Rhinelander, the foul, foam-laden Wisconsin River downstream from the paper mill was hardly the place for a pleasant day of fishing or canoeing. And on lazy summer days when we found ourselves choking on sulfur dioxide released from the mill our complaints were countered with rejoinders like "How would you like it if the mill were to move out? Our economy would collapse." When the opportunity presented itself, many, like me, departed.

What a difference 50 years of eco-political effort and industrial cooperation have wrought! Clean water, clean air and intelligent forest management have transformed our woodlands. Now they are coveted recreational areas. But these benefits come at a cost. Mills in societies paying lower wages, and willing to pollute their waters, can make paper at lower cost. If, in this environment of intense competition, our pulp mills eventually have to close, how will we manage our northern forests?

Most of us don't have the where-with-all to manage with our own hands. To get this help we may need to find new, environmentally friendly, outlets for our woodland resources. PIF is interested in looking at such problems and possible solutions. If you are of like mind we hope you are participating in organizations like Partners in Forestry. Get out those checkbooks, join, read our newsletters, come to our meetings and talk to your like-minded neighbors.

Welcome to Our New Members

Our newest members are Dr. R. T. Navratil of Racine and James H. Haley of Prospect Heights, IL. Welcome!

Wisconsin's Champion Trees

The University of Wisconsin press has just published *Wisconsin's Champion Trees: A Tree Hunter's Guide*. This book lists the largest known trees in the state for 153 species of trees, many of them in the north. Trees are ever-changing, and existing "champions" are replaced as old trees die or new discoveries are made.

With the early spring weather, now is a good time to spend some hours exploring your forests in search of your largest trees, which could be a new discovery for you, or for a state record. Members are encouraged to submit their discoveries and measurements of their trees to PIF.

The Wisconsin DNR manages a website of the largest trees in the state. This site may be found at <http://dnr.wi.gov/org/land/forestry/uf/champion>

You may order *Wisconsin's Champion Trees* online, at <http://www.wisc.edu/wisconsinpress/books>.

Northwoods Forestry Summit: *Opportunity Within Crisis*

On June 17th, an invited group of individuals directly involved with the forest products economy in northern Wisconsin will meet at Trees for Tomorrow in Eagle River for the Northwoods Forestry Summit, hosted by Partners in Forestry. This high-level summit is generating excitement, and many have already confirmed attendance. The participant list includes folks such as Dan Haugen of Certified Wood Products, Paul DeLong of the Wisconsin Department of Natural Resources, Kretz Lumber Company, and State Senator Roger Breske, to name a few.

President's Corner

Joe Hovel, Chair

I would like to congratulate member Gil Henderson, who is featured in this issue of *Partners News* with the story on page three! Gil felt so deeply committed to sustainable forestry, and so concerned about development in the border lakes region, that he has taken the step to place a large portion of his land in the hands of the people of the State of Wisconsin. Thank you, Gil, for you recognized the importance of forest land conservation as being paramount in sustainable forestry. I am pleased to have been able to help you with this transaction, as we have experienced the benefits of the private and public land partnership.

PIF has an exciting month ahead in June as we host some of the high level participants in the forest industry in northern Wisconsin, for the full-day summit at Trees for Tomorrow!

As Roland stated at the beginning of the newsletter, we can use participation from our membership on a host of issues, so please let us know your interests!

Board Meeting Highlights

All members are invited to the Board meetings. The minutes of the March and April meetings are highlighted here, for those unable to attend. Discussion during these meetings was primarily focused on the upcoming Forestry Summit; below are the main items of new business.

March 1st, 2005:

Joe Hovel reported that, through discussion with Senator Breske's office, Sen. Breske and his staff will be drafting legislation regarding the issue of lumber grading.

April 7th, 2005:

The Board passed Resolution 01-05, RE: Support for preservation of the integrity of the MFL. This resolution is in opposition to the proposed MFL workforce cut of 40%. This resolution and any others passed by the PIF Board are available to all members. Please contact PIF if you would like to receive a copy.

Upcoming Events

✂ The next Board meeting will be held on Tuesday, May 3rd, at the Conover Town Hall, beginning at 5:00 PM. June's meeting will fall on the 7th, at the same place and time. All members are welcome and encouraged to attend PIF's board meetings.

✂ The Northwoods Forestry Summit will be held on June 17th, 2005, at Trees for Tomorrow in Eagle River. For more information, please contact Bob Simeone at 715-547-3304.

PIF Contact Information:

Partners in Forestry

6063 Baker Lake Road
Conover, WI 54519

Phone: (715) 479-8528

Fax: (715) 479-8528

Email: logcabin@nnex.net

Submissions to the Newsletter

All members are encouraged to send any articles, announcements, or items of interest for inclusion in the Partners News. For items to be included in the July/August issue, they must be received by June 20th. Submissions may be emailed, faxed, or mailed to PIF.

If you know of anyone who might be interested in PIF, or who might find helpful PIF's mission to assist landowners in sustainable management of their woodlands, please contact us. We would be happy to send them information on PIF, a copy of the newsletter, or any other information that could assist them.

You may also request additional electronic copies of the newsletter. Please email PIF if you would like the latest issue or any back issues in this format.

Board of Commissioners of Public Lands

Acquires Over 400 Acres in Vilas County

The Board of Commissioners of Public Lands (BCPL) is a long-standing State agency that owns and sustainably manages over 78,000 acres of forestlands across the state. For the past 60 years, the BCPL has carried out an active forestry program that supplies Wisconsin's forest economy, and all revenue generated from timber harvest and sales is used as education funds, dispersed as school library aids. All lands owned by the BCPL are open to the public for hunting, fishing, hiking, bird watching, and other forms of recreation.

The BCPL have many holdings in the northern part of Wisconsin, and their lands adjoin the forests of several members of Partners in Forestry. Gil Henderson is himself a member PIF.

The article below was prepared by Mike Paus, district administrator for the BCPL.

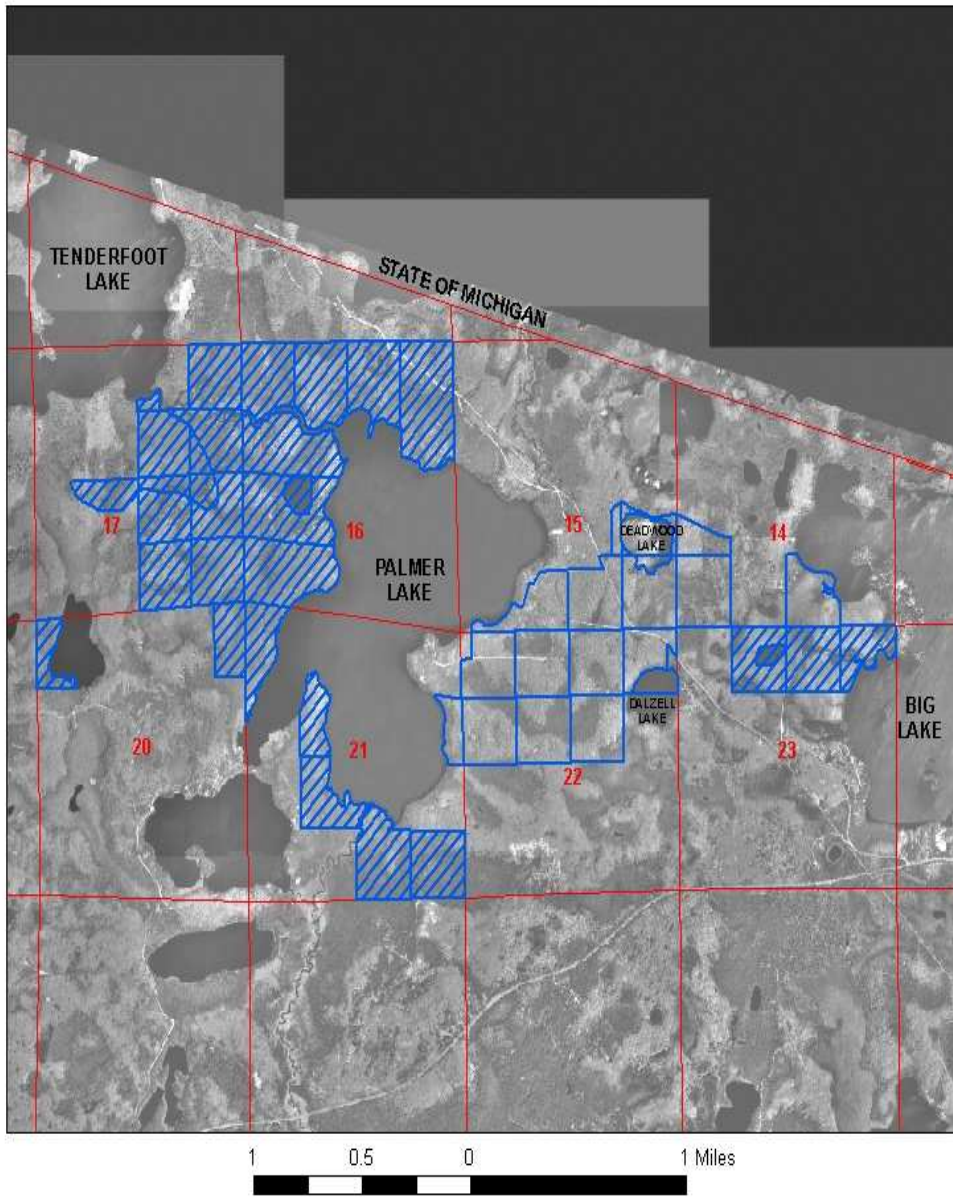
The Board of Commissioners of Public Lands recently acquired title to 487 acres of property originally owned by Gilbert and Martyne Henderson of Vandalia, Ohio. The property is nearly two-miles wide and is situated between the east side of Palmer Lake and the west side of Big Lake, in the Township of Land O'Lakes, Vilas County (see map). The Hendersons are long time seasonal residents of Land O'Lakes. Mr. Henderson's parents, Dr. Alex and Marie Henderson, opened and operated the former Deer Path Camp resort between the Cisco Chain of Lakes and Palmer Lake on property that they bought from the Stange Lumber Company in the late 1920's and early 1930's. The Hendersons have applied sustainable stewardship practices to the forestland and the property had certification from the American Tree Farm System. The Hendersons wanted to prevent their land from being fragmented by development and to continue to have sustainable timber harvest maintained on the property. They approached the Board in the summer of 2002 and negotiations began. The Board acquired title to the property on August 31, 2004.

The acquisition of the former Henderson property protects 10,000 feet of undeveloped shoreline on four lakes, including the entire shoreline of Deadwood Lake (see photo). The tract is predominantly upland hardwood with sugar maple, basswood and black ash comprising the main species. Potential for high value sawtimber is very good and the timber income potential for the entire tract approaches the high end for upland hardwood stands in the area. Remnant old-growth hemlock hardwood stands on Palmer and Deadwood Lakes will continue to be protected. With the addition of this land, the total BCPL ownership in the Palmer Lake area is now nearly 1500 acres. This large tract of BCPL ownership provides a major contribution to a wildlife corridor between the Northern Highland State Forest, and the Notre Dame Research Area and the Ottawa National Forest in Michigan.

In addition to providing timber sale income to the Normal School Trust Fund from select harvest, the public will retain access to the lakes, shorelines and forest for recreation and aesthetics.

See map on the next page for description.

LAND ACQUIRED IN VILAS COUNTY AUGUST 31, 2004



Legend

- BCPL Lands
- New Land Acquisition
- Section Lines